

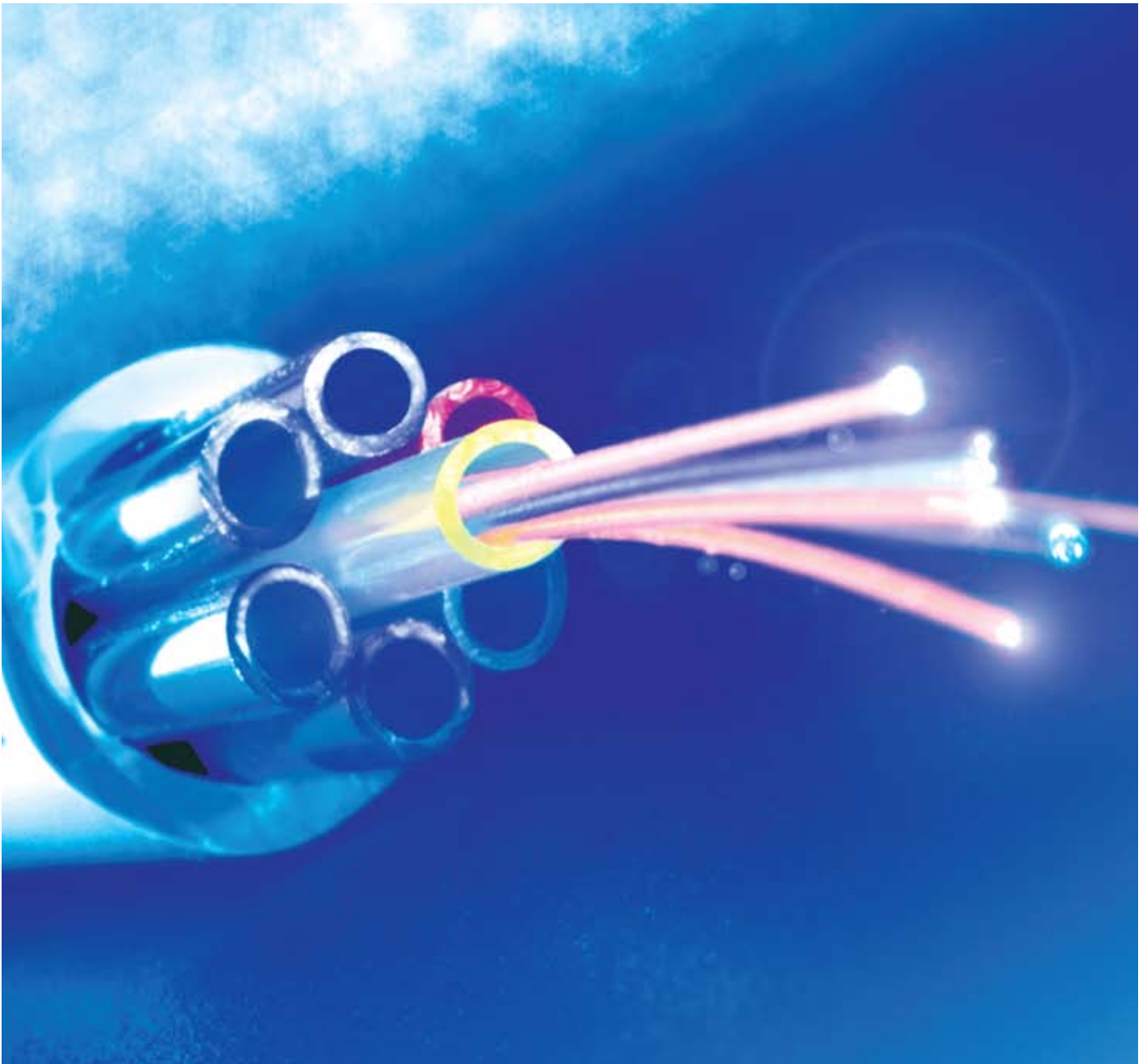
Air Blown Fibre Solutions



BLOLITE

MicroBlo

Brand-Rex 



A trusted voice in a world of confusion

Brand-Rex has developed the enviable position of being Europe's premier, home based provider of 'best in class' communication infrastructure solutions. This position has been gained through a core philosophy of delivering maximum performance through design excellence. With a reputation as one of the most respected expert voices within the technical community, Brand-Rex has built a business and product ethos around trust. A high level of knowledge, experience and integrity, developed during three decades of networking deployment, allows Brand-Rex to consistently deliver first class solutions and a first class service to customers.

Introduction

In life there are few certainties, change is one of them. Change within communications infrastructure moves at an alarming rate with today's standard being just that, a standard for today. Tomorrow's standard is always just around the corner. The Brand-Rex Air Blown Fibre Range offers a versatile and truly futureproof fibre infrastructure solution for many application areas, such as fibre to the desk / home, backbone, horizontal, campus, access, metro and data centre applications. The system provides the ability to change your infrastructure as demands on the network dictate - an insurance policy against change.

In choosing cabling system solutions, whether for small, medium or large multi site locations, network planners have some serious issues to consider. Among these is the decision as to which type and mix of fibre to install to allow for network expansion and upgrade, this has been a dilemma for many years. There is a viable alternative. The use of an air blown fibre system represents a truly flexible and futureproof solution for the installation.

In the past, industry practice has been to install 'dark fibre' to meet future demands, however, this strategy is by no means risk-free as unterminated, untested fibres may not be fit for purpose when the time comes to light the fibres in the future. For gradual roll out of fibre to the home (FTTH) networks dark fibre is not connected to customers until services are ordered, an air blown fibre solution provides the ideal method for planned revenue generation in FTTH networks allowing fibre to be connected as required.

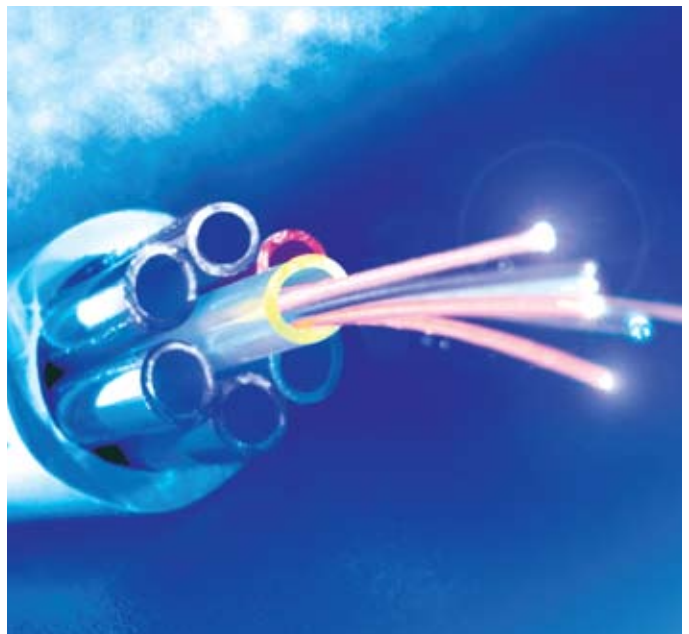
Air Blown Fibre Solutions

The Brand-Rex range offers two complementary technologies for providing fibre to the end user:

Blolite – air blown fibre system

MicroBlo – air blown microcable system

The Blolite system was one of the first Air Blown Fibre systems to be supplied for cabling infrastructure applications. Blolite is a very versatile system with backbone and / or fibre to the desk links and can allow for long distance links of up to 1km. Blolite fibres are easily installed into Blolite microducts without disruption to the workplace. Blolite fibres are simply terminated and are compatible with all standard optical connectors.



Blolite is extremely reliable, with a zero failure rate since the first installations in 1988. It has been the system of choice for premier users such as the Scottish Parliament, Tower 42 London, Edinburgh University, Amsterdam Academic Medical Centre (AMC), Manchester Airport, Malaga Airport, Puerto de Huelva, British MoD and US Navy, who have taken advantage of the system.

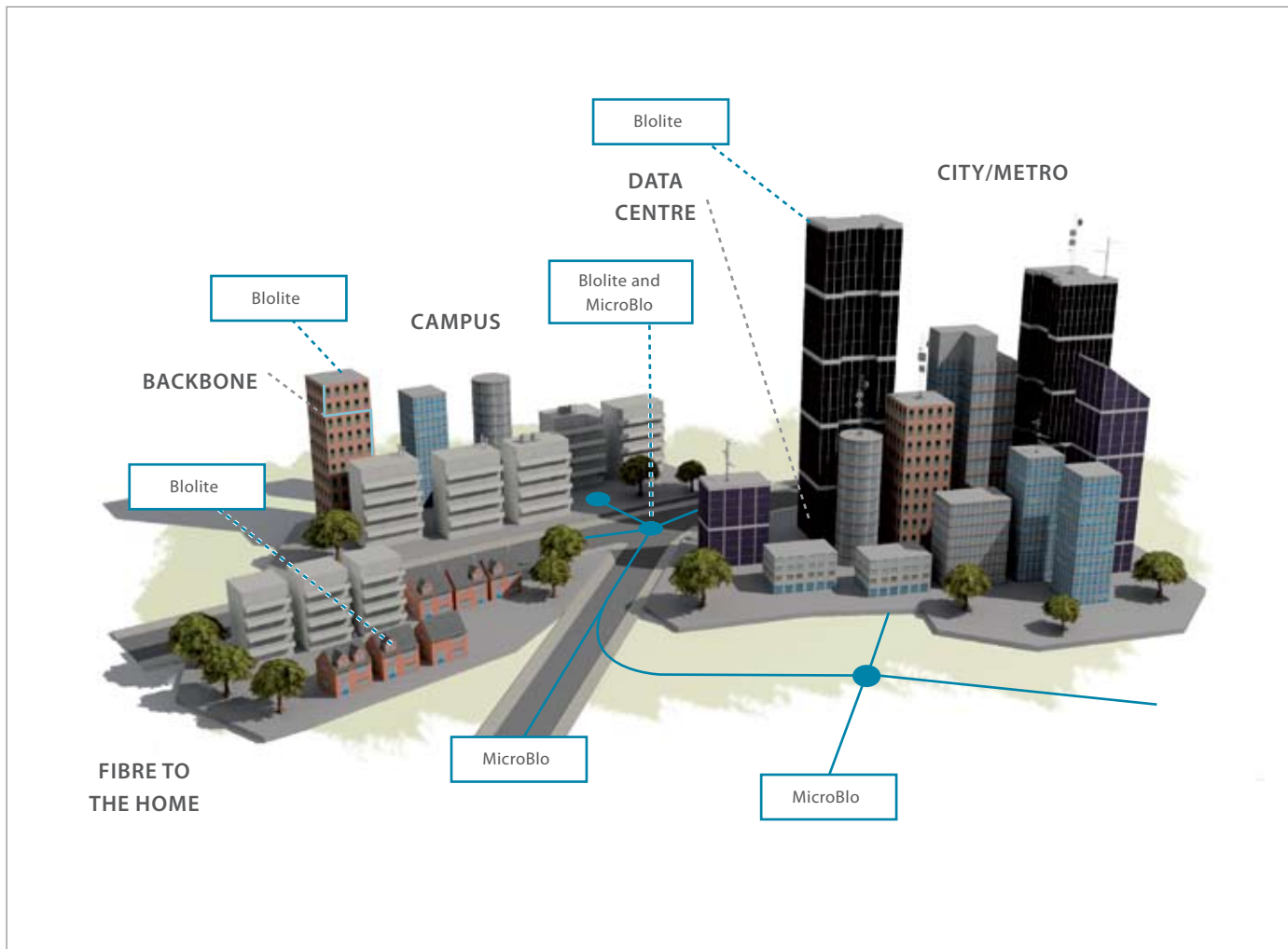
MicroBlo represents the natural evolution of Blolite

By introducing a range of microcables optimized for blowing into microducts, today's greater demand of increased distances and fibre counts can be met. Using the same principle of deferring cost, ease of upgrade and flexibility within the system, MicroBlo microcables can offer an ideal solution for network demands.

Both Blolite and MicroBlo systems are compliant with the recently published IEC 60794-5 Optical fibre cables – Part 5: Sectional specification for microduct cabling for installation by blowing.

Our solutions offer complete freedom from risk by pre-installing a microduct route that can be modified at any time throughout the life of the network. The microducts can then be populated using the fibre type you need, in the quantity you need, when you need it and most importantly only paid for once it is installed.

Blolite and MicroBlo Application Areas



Introducing Blolite and MicroBlo

Individual blown fibre (Blolite) is a point to point solution suited to applications such as fibre to the desks/home, backbone links, campus and data centre applications. The specially coated single fibres are 'blown' through the microducts using 'dry' air and can be installed in very complex tortuous routes often found within buildings.

MicroBlo microcables are ideally suited for outside plant, campus, metro and access applications. The microcables are of a multiple loose tube construction and are introduced into the microducts using the air as a lubricant to facilitate the 'blowing' of the cables.

In the campus network, combining MicroBlo microcables with Blolite fibre provides a complete solution that will realize all the benefits of an air blown fibre system through its lifetime.

FEATURES AND BENEFITS

MicroBlo

An extended range of microcables from 2 to 96 fibres and protected microducts and from single way to 24 way. The protected microducts are in constructions suitable for direct burial, direct install and indoor environments for microcable requirements. This allows the network designer to have greater flexibility in planning for short distance urban or long distance remote rural locations. In addition the cable can now be taken from outside routes into a termination point inside the building.

Defer & Distribute Costs

An Air Blown Fibre solution provides a fibre-ready infrastructure that will lower the initial outlay for an installation. The fibre is purchased and installed only when required which reduces the initial capital expenditure by reducing the necessity to install dark fibre.

Future Proofing / Ease of Upgrade

Both Blolite and MicroBlo infrastructure can be easily expanded and upgraded with minimum disruption to the current network. Different types of fibre can be added as required, allowing end-users to keep up to date with their latest network requirements.

Flexibility

The microduct Infrastructure can be amended, re-routed and new destinations added with minimal disruption and without fusion splicing optical fibre, which optimises the power budget.

Security

An Air Blown Fibre solution brings added security to a network by providing the ability to diversify routings to desired locations. The microducts can also provide different pathways for different levels of security.

Ease of Repair

Brand-Rex offer a full range of connectivity and accessory range which helps to provide a simple and quick cost effective repair solution when compared to traditional methods.

Training, Support and Warranty

The Blolite system is available to our already Authorised Installer and VAR base through a Franchise system. This franchise system is offered with 3 levels from only having the ability to purchase/install the microduct infrastructure through to the highest level where installers retain the Installation equipment and can additionally offer the blowing of the fibres.

All installers who become a Blolite franchisee must complete a comprehensive training program carried out by Brand-Rex which is reviewed annually in order to ensure that the systems are designed/installed correctly.

Authorised Blolite Franchisees have access to the Brand-Rex Technical Support Department who can assist with design* and installation questions up to and including site support.

The Brand-Rex MicroBlo microcables and microducts are available without the need for a franchise agreement. Brand-Rex can assist with the designing of infrastructures* where requested.

Both Blolite and MicroBlo solutions are incorporated into the Brand-Rex 25 year Warranty Scheme.

A warranty for both the installed fibre links and the tube infrastructure is offered following submission and acceptance by Brand-Rex of test data for each individual link/channel.

(* May be subject to an additional charge)

Blolite Air Blown Fibre Microduct Size Selection Guidelines - Size vs Fibre Count

Blowing Distance (Metres)	1 Fibre	2 Fibre	4 Fibre	6 Fibre	8 Fibre	12 Fibre
100	3mm	3mm	3mm	5mm	5mm	5mm
200	3mm	3mm	3mm	5mm	5mm	5mm
300	3mm	3mm	3mm	5mm	5mm	5mm
400	3mm	3mm	5mm	5mm	5mm	5mm
500	3mm	3mm	5mm	5mm	5mm	8mm
600	8mm	8mm	8mm	8mm	8mm	-
700	8mm	8mm	8mm	8mm	8mm	-
800	8mm	8mm	8mm	8mm	8mm	-
900	8mm	8mm	8mm	8mm	8mm	-
1000	8mm	8mm	8mm	8mm	8mm	-

MicroBlo Microcable Size Selection Guide

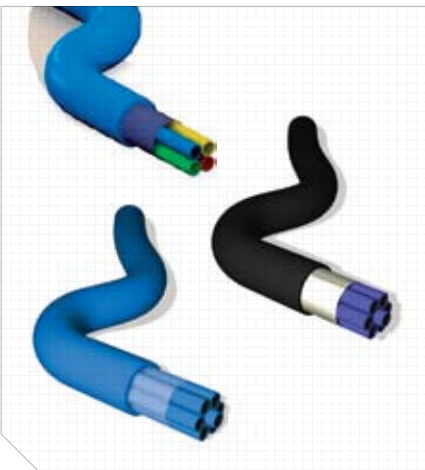
Microcable	Individual Microduct Size	Multway Construction	Direct Burial 1-Way Microduct size
2 to 12 fibre	5/3.5 mm	1,2,4,7,12,19,24 way	7/3.5mm
12 to 72 Fibre	10/8 mm	1,4,7,12 way	12/8mm
96 Fibre	12/9.4 mm	1,4,7,12 way	14/9.4mm

AIR BLOWN FIBRE PRODUCT RANGE



Single Blowable Fibre Units

The unique Blolite fibre unit provides the key element of the system and is the only air blown fibre system on the market that uses a single blown fibre. It is coated with a specially developed material that enhances 'blowability'. Fibres are available in 12 individual colours and any standard fibre type. This flexible fibre enhances installation in tortuous routes and is tolerant to low bend radius of microduct. With no bundle to break out or coating residue to clean, Blolite is ideal for direct termination to all standard optical connectors or for splicing using Blolite pigtailed.



Protected Microducts

The Blolite system uses a range of extruded microducts with inner surface optimized to assist the blowing process. Microducts are available with an outer diameter of 3, 5 and 8 mm. The size required is dependant on the required capacity, route complexity and length. Multiducts, alternatively know as 'protected microducts', are cabled groups of microducts. The addition of a sheath assists in the installation and provides a robust and easily handled unit that can be installed internally or externally to provide the fibre link infrastructure. Multiducts are available with either a polyester tape and Low Smoke, Halogen free sheath (Universal Duct/Internal product) or an aluminium moisture barrier and polyethylene sheath (External Product). Available in 1,2,4,7,12 and 19 microduct constructions to suit your infrastructure capacity and future development requirements.

BLOLITE AIR BLOWN FIBRE INSTALLATION EQUIPMENT



Installation Equipment

The effective installation of Blolite fibres into a Blolite microduct route requires the use of specially designed equipment. The IM2000 Blocentre comprises the purpose made blow head, a tripod and pay-off system, all supplied in sturdy carry cases. In addition to the IM2000 the installer will require a portable conditioned air supply delivering a minimum of 155slpm @ 10 bar and a 240v power source. The blow head uses a belt drive system to forward up to 12 fibre units into a microduct, at which point the air is introduced and the installation of the fibre is enabled. Blolite fibre units can be installed into Blolite microducts at a maximum speed of 40m / min to a maximum distance of 1,000m.

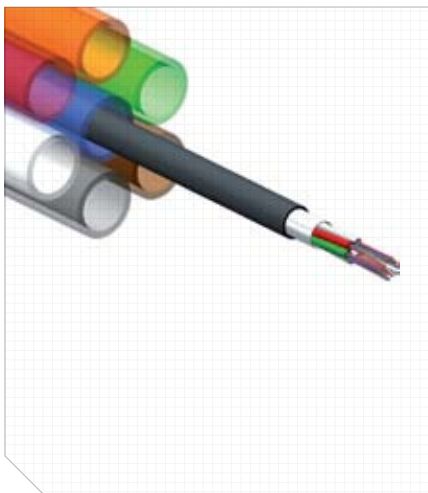
See table on p5 for Microduct size selection guidance.

MICROBLO AIR BLOWN CABLE PRODUCT RANGE



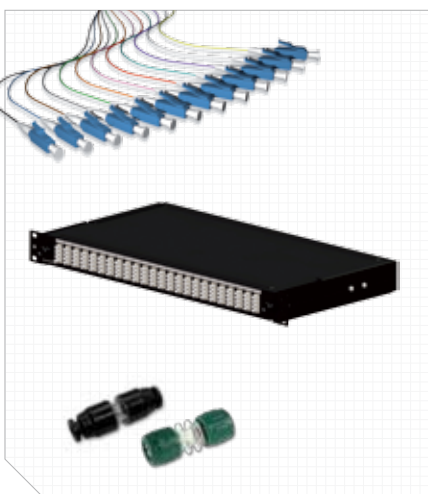
Protected Microducts

To facilitate the installation of MicroBlo microcable, a range of protected microducts are available. These products are constructed with MicroBlo PER microducts for external use and low smoke halogen free material for indoor use. There are alternative constructions designed to suit the needs of the installation environment. For direct install into an existing duct infrastructure there are metallic and non metallic solutions. The metallic protected microducts are constructed of PER microducts surrounded by a layer of aluminium tape and a polyethylene outer sheath. The non-metallic protected microducts use water blocking materials under the polyethylene outer sheath. There is now a range of non metallic protected microducts for direct burial applications with a double sheath of polyethylene and HDPE outer. To extend the application of the MicroBlo cables a range of Low Smoke, Halogen Free indoor protected microducts has been introduced. Simply by using microduct connectors the cable can be installed from an external network directly into or through a building to the point where the optical fibres are to be terminated. This range of protected microducts is optimized for MicroBlo air blown cable installation.



Microcable

Microduct cabling systems are popular solutions for building flexibility into a network, they can be populated when needed and leave spare capacity for future growth. The ability to defer initial installation costs is a key advantage of an air blown cable installation over traditional cable installations. MicroBlo microcables are available with fibre counts from 2 to 96. The new 2 to 12 microcable is fully waterblocked and protected by an optimized polymer outer sheath. The cable is designed for installation into microducts with a minimum inner diameter of 3.5 mm. The 12 to 72 and 96 fibre microcables are constructed of a non metallic, resin bonded glass central strength member and high density polyethylene sheath. These cables have been specifically designed and developed for improved installation efficiency in pre-installed 10/8mm or 12/9.4 mm microducts respectively. Dry water blocking technology ensures the cable cores are fully water blocked.



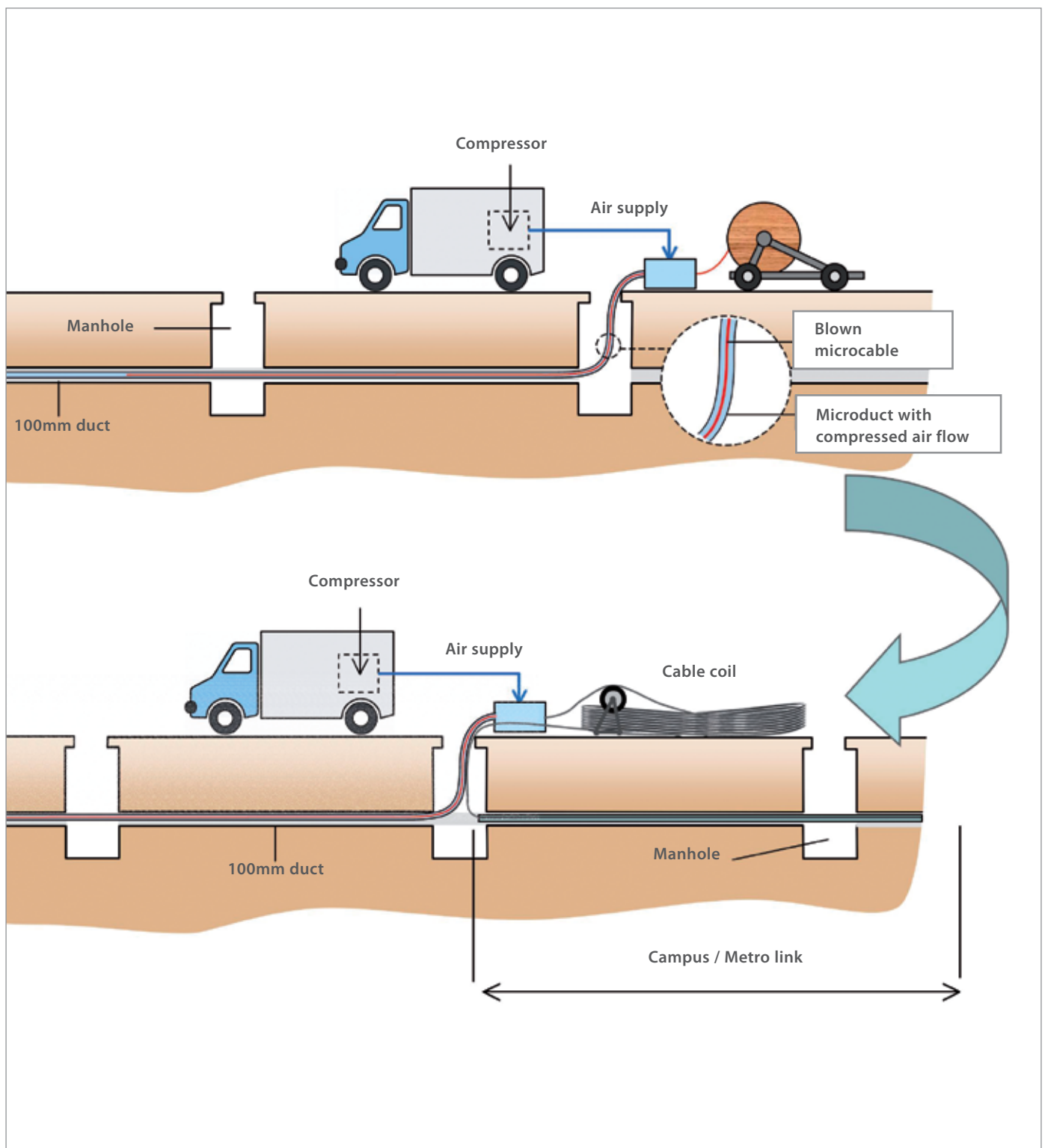
Connectors, Panels and Pigtails

To compliment the Air Blown Fibre System there are a range of ancillary products and accessories that complete the system. To enable the creation of a continuous path into which the Blolite fibre unit or MicroBlo cable can be blown pneumatic microduct connectors are required. The range includes pneumatic end stops to seal unused microducts within a multiduct when they are not populated.

Blolite can be terminated in the standard Brand-Rex FibrePlus optical panel. Microducts can either be passed through the formed aperture in the rear of the panel and secured onto a management bar or terminated into pneumatic clip-in bulkhead connectors that fit into the apertures on the rear of the FibrePlus panels. With the panel, optical connectors can either be directly terminated on to the Blolite fibre unit or spliced using Blolite pigtails. Blolite pigtails are more rugged than bare fibre, easy to strip for splicing and can offer space saving compared to 900µm pigtails. They are available in 12 standard Blolite colours and use all standard connector types.

Extended blowing distances for cable

Blown cable can achieve extended distances by using a technique known as 'on-blowing'. During an install after the cable has reached its blowing distance limit, the cable can be blown through the existing duct and flected. The blowing equipment is moved to this point and the flected cable can then be blown onwards. The diagram below illustrates this process.



Blolite Internal Multiduct

	3.0mm	5.0mm	8.0mm
Single Microduct	-	20-0101-00	20-0104-00
1 Way MultiDuct	20-0103-05	-	-
2 Way MultiDuct	-	20-0201-06	20-0204-06
4 Way MultiDuct	20-0403-05	20-0401-06	20-0404-06
7 Way MultiDuct	20-0703-05	20-0701-06	20-0704-06
12 Way MultiDuct	20-1203-05	20-1201-06	20-1204-06
19 Way MultiDuct	20-1903-05	20-1901-06	-

Blolite External Multiduct

	5.0mm	8.0mm
Single Microduct	-	-
1 Way MultiDuct	21-0101-02	21-0104-02
2 Way MultiDuct	21-0201-02	21-0204-02
4 Way MultiDuct	21-0401-02	21-0404-02
7 Way MultiDuct	21-0701-02	21-0704-02
12 Way MultiDuct	21-1201-02	21-1204-02
19 Way MultiDuct	21-1901-02	-

Blolite Fibre

	062*	050*	OM3*	Z50*	008*
Single Blolite Fibre - White	10-0101-03	10-0005-03	10-0003-03	10-0004-03	10-0200-03
Single Blolite Fibre - Black	10-0101-05	10-0005-05	10-0003-05	10-0004-05	10-0200-05
Single Blolite Fibre - Blue	10-0101-06	10-0005-06	10-0003-06	10-0004-06	10-0200-06
Single Blolite Fibre - Orange	10-0101-07	10-0005-07	10-0003-07	10-0004-07	10-0200-07
Single Blolite Fibre - Green	10-0101-08	10-0005-08	10-0003-08	10-0004-08	10-0200-08
Single Blolite Fibre - Red	10-0101-09	10-0005-09	10-0003-09	10-0004-09	10-0200-09
Single Blolite Fibre - Grey	10-0101-10	10-0005-10	10-0003-10	10-0004-10	10-0200-10
Single Blolite Fibre - Yellow	10-0101-11	10-0005-11	10-0003-11	10-0004-11	10-0200-11
Single Blolite Fibre - Brown	10-0101-12	10-0005-12	10-0003-12	10-0004-12	10-0200-12
Single Blolite Fibre - Violet	10-0101-13	10-0005-13	10-0003-13	10-0004-13	10-0200-13
Single Blolite Fibre - Pink	10-0101-14	10-0005-14	10-0003-14	10-0004-14	10-0200-14
Single Blolite Fibre - Turquoise	10-0101-15	10-0005-15	10-0003-15	10-0004-15	10-0200-15

Blolite Part Loaded Optical Panels

* Fibre codes are detailed on page 75 of the main catalogue.

	4 Adaptor	6 Adaptor	8 Adaptor	12 Adaptor	16 Adaptor	24 Adaptor
ST Single Mode	FPCC1SXSM04ST2	FPCC1SXSM06ST2	FPCC1SXSM08ST2	FPCC1SXSM12ST2	FPCC1SXSM16ST2	FPCC1SXSM24ST2
ST Multi Mode	FPCC1SXMM04ST2	FPCC1SXMM06ST2	FPCC1SXMM08ST2	FPCC1SXMM12ST2	FPCC1SXMM16ST2	FPCC1SXMM24ST2
FC Single Mode	FPCC1SXSM04FC2	FPCC1SXSM06FC2	FPCC1SXSM08FC2	FPCC1SXSM12FC2	FPCC1SXSM16FC2	FPCC1SXSM24FC2
SC Duplex - Single Mode	FPCC1SXSM08DC2	FPCC1SXSM12DC2	FPCC1SXSM16DC2	FPCC1SXSM24DC2	FPCC1SXSM32DC2	FPCC1SXSM48DC2
SC Duplex - Multi Mode	FPCC1SXMM08DC2	FPCC1SXMM12DC2	FPCC1SXMM16DC2	FPCC1SXMM24DC2	FPCC1SXMM32DC2	FPCC1SXMM48DC2
SC Simplex Single Mode	FPCC1SXSM04SC2	FPCC1SXSM06SC2	FPCC1SXSM08SC2	FPCC1SXSM12SC2	FPCC1SXSM16SC2	FPCC1SXSM24SC2
SC Simplex Multi Mode	FPCC1SXMM04SC2	FPCC1SXMM06SC2	FPCC1SXMM08SC2	FPCC1SXMM12SC2	FPCC1SXMM16SC2	FPCC1SXMM24SC2
MT-RJ Duplex	FPCC1SXMM08MJ2	FPCC1SXMM12MJ2	FPCC1SXMM16MJ2	FPCC1SXMM24MJ2	FPCC1SXMM32MJ2	FPCC1SXMM48MJ2
LC Duplex Single Mode	FPCC1SXSM08LC2	FPCC1SXSM12LC2	FPCC1SXSM16LC2	FPCC1SXSM24LC2	FPCC1SXSM32LC2	FPCC1SXSM48LC2
LC Duplex Multi Mode	FPCC1SXMM08LC2	FPCC1SXMM12LC2	FPCC1SXMM16LC2	FPCC1SXMM24LC2	FPCC1SXMM32LC2	FPCC1SXMM48LC2
LC Quad Single Mode	-	-	-	-	-	FPCC1SXSM96LC2
LC Quad Multi Mode	-	-	-	-	-	FPCC1SXMM96LC2

Blolite Optical Panels

Unloaded Optical for up to 24 ST or FC adaptors - Black	FPCC1SXXX24ST2
Unloaded Optical for up to 12 SC Duplex or LC Quad adaptors - Black	FPCC1SXXX24DC2
Unloaded Optical for up to 24 SC Duplex or LC Quad adaptors - Black	FPCC1SXXX48DC2
Unloaded Optical for up to 24 SC Simplex, LC Duplex or MTRJ adaptors - Black	FPCC1SXXX24SC2
Fibre management kit including loops and 2 x 24 way splice bridge	FPCCFKIT001
3mm Bloduct bulkhead connector collar - Pack 25 (requires 30-0301-05)	30-511-04
5mm Bloduct bulkhead connector	30-506-09
ST/FC Blanking Plugs (Black) - Pack 100	BPST101-100
SC Simplex Blanking Plug (also suitable for LC & MT-RJ) (Black) - Pack 100	BPESC101-100
SC Duplex Blanking Plug (also suitable for LC & MT-RJ) (Black) - Pack 100	BPESC301-100

MicroBlo Internal Protected Microduct Range

	5.0mm	10.0mm	12.0mm
1 way	20-0115-03	20-0120-03	20-0122-03
2 way	20-0215-03	20-0220-03	20-0222-03
4 way	20-0415-03	20-0420-03	20-0422-03
7 way	20-0715-03	20-0720-03	20-0722-03
12 way	20-1215-03	20-1220-03	20-1222-03
19 way	20-1915-03	-	-
24 way	20-2415-03	-	-

MicroBlo Direct Install Protected Microduct Range

	5.0mm	10.0mm	12.0mm
1 way	21-0105-02	21-0111-02	21-0112-02
2 way	21-0205-02	21-0211-02	21-0212-02
4 way	21-0405-03	21-0411-02	21-0412-02
7 way	21-0705-02	21-0711-02	21-0712-02
12 way	21-1205-02	21-1211-02	21-1212-02
19 way	21-1905-02	-	-
24 way	21-2405-02	-	-

MicroBlo Non-Metallic Direct Install Protected Microduct Range

	5.0mm	10.0mm	12.0mm
1 way	23-0105-02	23-0111-02	23-0112-02
2 way	23-0205-02	23-0211-02	23-0212-02
4 way	23-0405-03	23-0411-02	23-0412-02
7 way	23-0705-02	23-0711-02	23-0712-02
12 way	23-1205-02	23-1211-02	23-1212-02
19 way	23-1905-02	-	-
24 way	23-2405-02	-	-

MicroBlo Direct Burial Protected Microduct Range

	7.0mm	12.0mm	14.0mm
1 way	26-0105-09	26-0111-09	26-0112-09
	5.0 mm	10.0 mm	12.0 mm
2 way	26-0205-09	26-0211-09	26-0212-09
4 way	26-0405-09	26-0411-09	26-0412-09
7 way	26-0705-09	26-0711-09	26-0712-09
12 way	26-1205-09	26-1211-09	26-1212-09
19 way	26-1905-09	-	-
24 way	26-2405-09	-	-

MicroBlo Microcable

Fibre Count	062*	050*	0M3*	008*
2 fibre	HF062BMC02WNNM3	HF050BMC02WNNM3	HF0M3BMC02WNNM3	HF008BMC02WNNM3
4 fibre	HF062BMC04WNNM3	HF050BMC04WNNM3	HF0M3BMC04WNNM3	HF008BMC04WNNM3
8 fibre	HF062BMC08WNNM3	HF050BMC08WNNM3	HF0M3BMC08WNNM3	HF008BMC08WNNM3
12 fibres	HF062BMC12WNNM3	HF050BMC12WNNM3	HF0M3BMC12WNNM3	HF008BMC12WNNM3
12 fibres	HF062BMC12WNNM6	HF050BMC12WNNM6	HF0M3BMC12WNNM6	HF008BMC12WNNM6
24 fibre	HF062BMC24WNNM6	HF050BMC24WNNM6	HF0M3BMC24WNNM6	HF008BMC24WNNM6
36 fibre	HF062BMC36WNNM6	HF050BMC36WNNM6	HF0M3BMC36WNNM6	HF008BMC36WNNM6
48 fibre	HF062BMC48WNNM6	HF050BMC48WNNM6	HF0M3BMC48WNNM6	HF008BMC48WNNM6
60 fibre	HF062BMC60WNNM6	HF050BMC60WNNM6	HF0M3BMC60WNNM6	HF008BMC60WNNM6
72 fibre	HF062BMC72WNNM6	HF050BMC72WNNM6	HF0M3BMC72WNNM6	HF008BMC72WNNM6
96 fibre	HF062BMC96WNNM8	HF050BMC96WNNM8	HF0M3BMC96WNNM8	HF008BMC96WNNM8

* Fibre codes are detailed on page 75 of the main catalogue.

Blolite Pigtail

	062	050	0M3	008
Blolite Fibre Pigtail LC - White	40-2110-03	40-1110-03	40-4110-03	40-3110-03
Blolite Fibre Pigtail LC - Black	40-2110-05	40-1110-05	40-4110-05	40-3110-05
Blolite Fibre Pigtail LC - Blue	40-2110-06	40-1110-06	40-4110-06	40-3110-06
Blolite Fibre Pigtail LC - Orange	40-2110-07	40-1110-07	40-4110-07	40-3110-07
Blolite Fibre Pigtail LC - Green	40-2110-08	40-1110-08	40-4110-08	40-3110-08
Blolite Fibre Pigtail LC - Red	40-2110-09	40-1110-09	40-4110-09	40-3110-09
Blolite Fibre Pigtail LC - Grey	40-2110-10	40-1110-10	40-4110-10	40-3110-10
Blolite Fibre Pigtail LC - Yellow	40-2110-11	40-1110-11	40-4110-11	40-3110-11
Blolite Fibre Pigtail LC - Brown	40-2110-12	40-1110-12	40-4110-12	40-3110-12
Blolite Fibre Pigtail LC - Violet	40-2110-13	40-1110-13	40-4110-13	40-3110-13
Blolite Fibre Pigtail LC - Pink	40-2110-14	40-1110-14	40-4110-14	40-3110-14
Blolite Fibre Pigtail LC - Turquoise	40-1110-15	40-1110-15	40-4110-15	40-3110-15

ST, SC, MT-RJ and FC connector types are available upon request.

For more information please visit www.brand-rex.com or email marketing@brand-rex.com

Blolite and MicroBlo Microduct Connectivity

Connector Type	3/2.1 mm	5/3.5 mm	7/3.5 mm	8/6 mm	10/8 mm	12/8 mm	12/9.4 mm	14/9.4 mm
Straight - Push/Pull	30-0301-05	30-0501-00	30-0721-00	30-0801-00	30-1001-00	30-1221-00	30-1201-00	30-1421-00
Straight - Screw Retention	-	30-0502-00		30-0802-00	-	-	-	-
End Stop	30-0304-05	30-0504-00	30-0704-00	30-0804-00	30-1004-00	30-1204-00	30-1204-00	30-1404-00
Connector End Plug	-	30-0505-09		30-0805-09	-	-	-	-
Bulkhead Mounted Connector	-	30-0506-09		-	-	-	-	-
Dust Cap	30-0307-05	30-0507-05	30-0707-05	30-0807-05	30-1007-05	30-1207-05	30-1207-05	30-1407-05
Gas Blocking 'T' Piece	-	30-0508-00		30-0808-00	-	-	-	-
8mm to 5mm Reducer	-	30-5801-00		-	-	-	-	-
Standard to Direct Burial mating connector	-	-	30-5701-00 (7/3.5mm to 5/3.5mm)	-	-	30-0201-00 (12/8mm to 10/8mm)	-	30-2401-00 (14/9.4mm to 12/9.4mm)
Termination Fibre Diverter	-	-	-	30-0809-05 -	-	-	-	-
8mm to 5mm Stem Converter	-	30-5810-05	-	-	-	-	-	-
Water Blocking Straight	-	30-0503-00	-		30-1003-00	-	30-1203-00	-

Blolite Tools

Radial Tube Cutter	54-0100-00
Duct Tool 4.5mm - 29.00mm	54-0201-00
Duct Tool 19.00mm - 40.00mm	54-0202-00
Duct Tool Spare Blades	54-0300-00
Duct Testing Kit	50-0506-00



brand-rex head office
viewfield industrial estate
glenrothes, fife
KY6 2RS
united kingdom

tel: +44 (0) 1592 772124
fax: +44 (0) 1592 775314

brand-rex asia pacific
17/F prosperity centre
77-81 container port road
kwai chung
hong kong

tel: +852 3620 2602
fax: +852 3621 0018

**brand-rex central
and eastern europe**

tel: +420 222 363 657

brand-rex france
120, rue jean jaurès
92 300 levallois perret
france

tel: +33 (0) 1 70 98 78 25
fax: +33 (0) 1 70 98 78 36

brand-rex germany
bunsenstraße 5
D-51647 gummersbach
germany

tel: +49 (0) 2261 814243
fax: +49 (0) 2261 814909

brand-rex IMEA
PO box 123908
M-3 mezzanine floor
sheikha sana building
sheikh zayed road
al wasl, dubai
united arab emirates

tel: +971 4 321 7525
fax: +971 4 321 7535

brand-rex italy
via giovanni da udine, 34
20156 milano
italy

tel: +39 02 3809 3711
fax: +39 02 30412014

brand-rex london
72 cannon street
london
EC4N 6AE
united kingdom

tel: +44 (0) 207 489 7637
fax: +44 (0) 207 113 2239

brand-rex nordic

tel: +46 (0) 704 621950

brand-rex portugal
lagoas park edificio 8 – piso 0
2740-244 porto salvo
portugal

tel: +351 21 421 4133
fax: +351 21 421 4135

brand-rex spain
avenida de la vega, 1
edificio 3. planta 2. oficina 11
28108 alcobendas
madrid, spain

tel: +34 914 905 919
fax: +34 916 573 331

www.brand-rex.com
marketing@brand-rex.com

The information contained in this document is valid and correct at the time of issue.
However, we reserve the right to modify details without notice in the light of subsequent
Standard / Specification changes and ongoing technical developments.
© Brand-Rex Limited 2010

Literature Ref: AIRBLOWN/UK/3 0110

