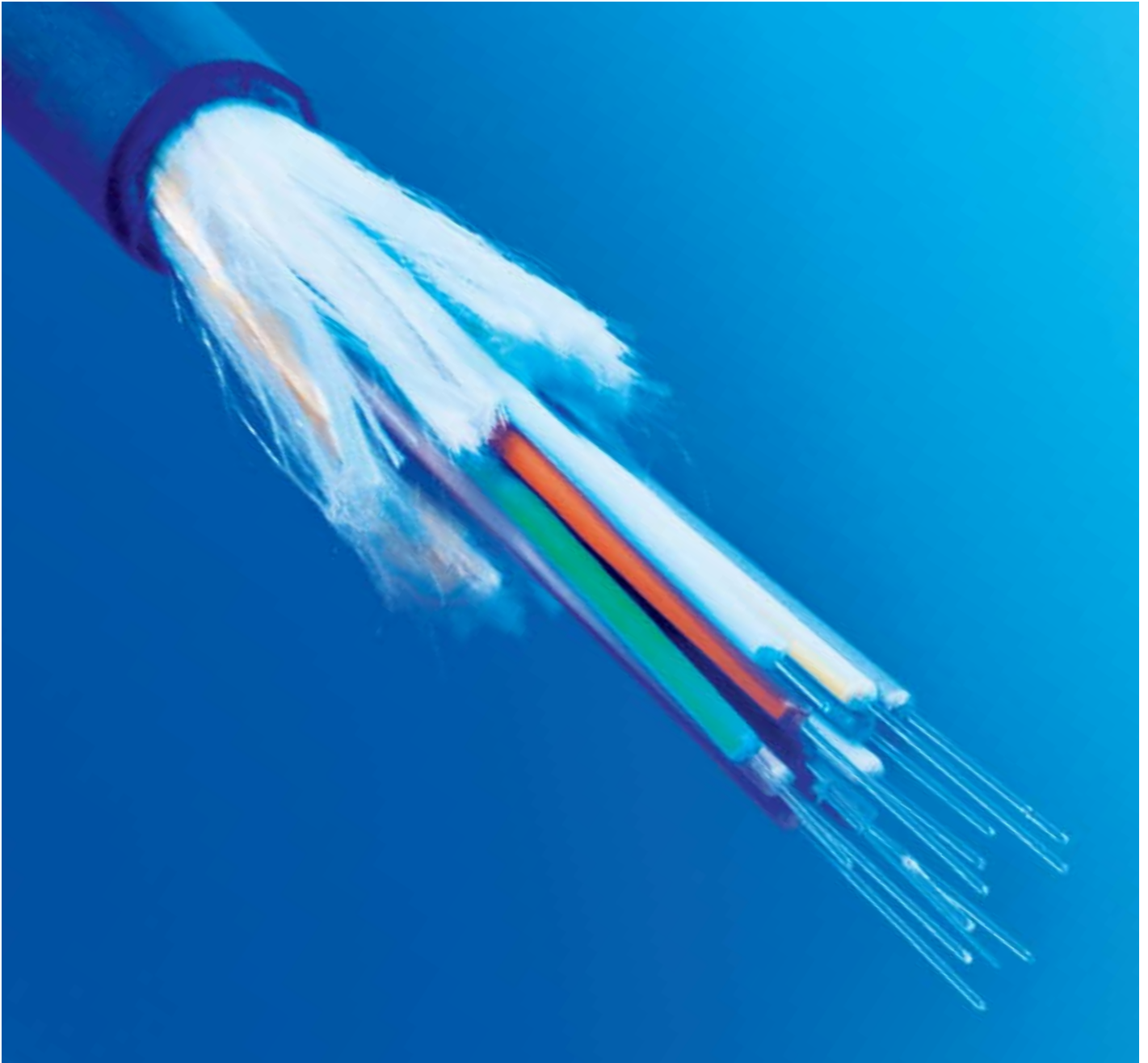


Optical Fibre Solutions

FP
FIBREPLUS

Brand-Rex 



A trusted voice in a world of confusion

Brand-Rex has developed the enviable position of being Europe's premier, home based provider of 'best in class' communication infrastructure solutions. This position has been gained through a core philosophy of delivering maximum performance through design excellence. With a reputation as one of the most respected expert voices within the technical community, Brand-Rex has built a business and product ethos around trust. A high level of knowledge, experience and integrity, developed during three decades of networking deployment, allows Brand-Rex to consistently deliver first class solutions and a first class service to customers.

Brand-Rex is committed to a future in optical cabling and truly believes in the benefits of optical cables for the future requirements of both LAN and WAN networks, for the following reasons.

Transmission Security

As optical fibre emits no electromagnetic energy, there is no opportunity to intercept transmissions remotely.

Bandwidth

Optical fibre has much greater data capacity than copper, and can carry more data further.

Transmission Distance

Optical systems have much lower attenuation than copper systems, meaning that signals can be transmitted further.

No Risk of EMI or RFI

Since fibre optic cables, are primarily glass, they have no risk of electromagnetic or radio frequency interference.

Why Brand-Rex

Brand-Rex offers a complete panel to panel solution, utilising all standard connectors and cable formats to deliver high quality and reliable optical solutions for your LAN.

The Brand-Rex solution includes a full range of tight buffered and loose tube cables to suit a wide range of environments, all standard optical fibre types can be selected for short or long distance applications, a comprehensive range of connectors, adaptors, pig tails and patch cords to support your network infrastructure. The range also includes an optical patch panel that has all the features that you would expect from a Brand-Rex system component.

Brand-Rex offers multilingual customer services to address your queries and regional warehousing for a local service. The complete LAN solution is covered by the 25 year Brand-Rex channel warranty, only available from authorised Brand-Rex installation partners.



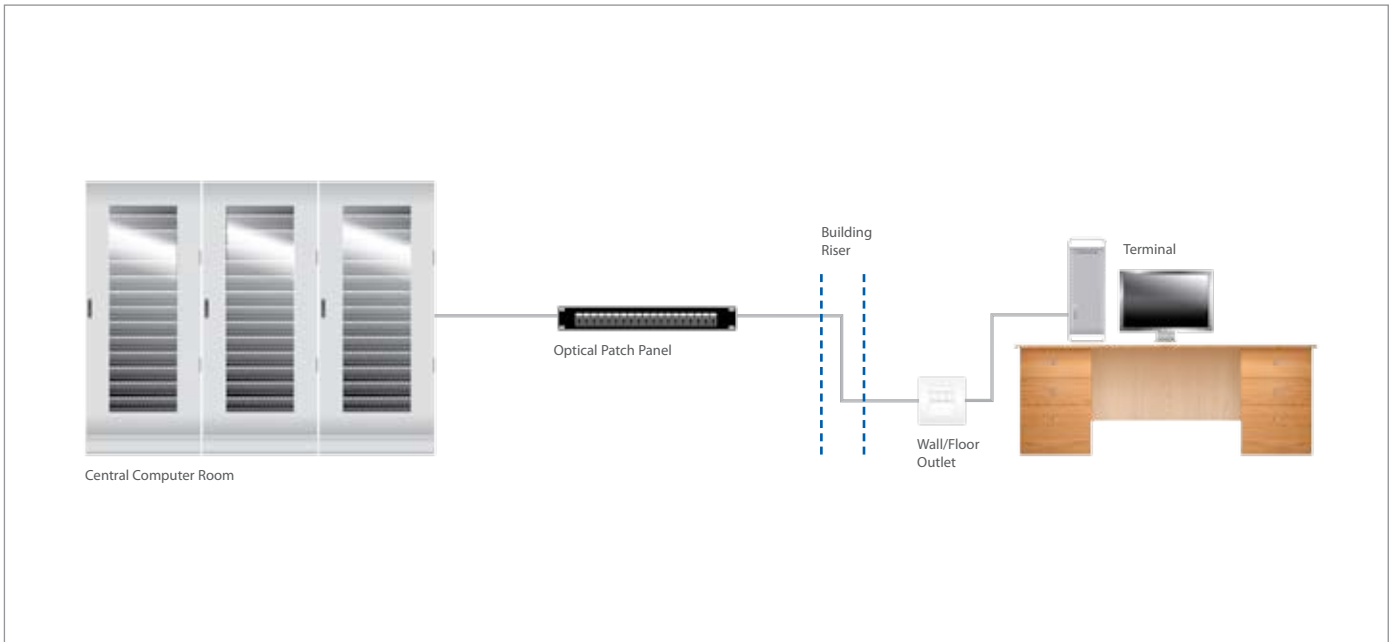
Application Protocols

Brand-Rex cables provide a foundation for building reliable, high speed, Local Area Networks to support transmission of optical class protocols currently defined in ISO 11801, EN 50173 and TIA 568B.

High speed LAN protocols supported include:

- 10BASE-FL
- 100BASE-FX
- 1000BASE-SX
- 1000BASE-LX
- 10GBASE-LX4
- 10GBASE-SX
- 10GBASE-LX
- 10GBASE-EX
- Fibre Channel (FC-PH) @1062Mbit/s
- FDDI LCF-PMD
- FDDI PMD
- FDDI SMF-PMD

FIBREPLUS LINK & CHANNEL



CABLED OPTICAL FIBRE SPECIFICATIONS

Part Number Identifier
IEC 60793-2- Category
ITU-T Recommendation
ISO 11801 Cable Class
Cabled Optical Performance of Fibre
Attenuation @ 850 / 1300nm (dB/km)
LED Launch Bandwidth @ 850 / 1300nm (MHz.km)
EMBc (calculated Effective Modal Bandwidth) @ 850nm (MHz.km)
Attenuation @ 1310 / 1550nm (dB/km)
Dispersion @ 1310 / 1550nm (ps/nm.km)
Numerical Aperture
Refractive Index @ 850nm
Refractive Index @ 1300nm
Refractive Index @ 1310 / 1550nm
Geometrical Data
Core Diameter (µm)
Core / Cladding Concentricity Error (µm)
Overall Coating Diameter (µm)
Coating Concentricity Error (µm)
Mechanical Data
Proof Test Level

OM3	Z50
10-A1a.2	10-A1a.2
G.651	G.651
OM3	Enhanced OM3
≤ 2.8 / ≤ 0.8	≤ 2.8 / ≤ 0.8
≥ 1500 / ≥ 500	≥ 3500 / ≥ 500
≥ 2000	≥ 4700
n/a	n/a
n/a	n/a
0.200 +/- 0.015	0.200 +/- 0.015
1.482	1.482
1.477	1.477
n/a	n/a
50 +/-2.5	50 +/-2.5
≤ 1.5	≤ 1.5
245 +/-10	245 +/-10
≤ 12.5	≤ 12.5
≥ 1%	≥ 1%
≥ 100kpsi	≥ 100kpsi

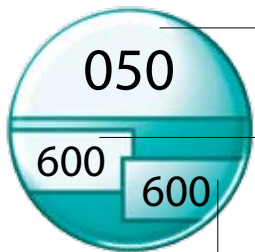
050	H50
10-A1a	10-A1a
G.651	G.651
OM1 & OM2	OM1 & OM2
≤ 2.8 / ≤ 0.8	≤ 2.8 / ≤ 0.8
≥ 500 / ≥ 800	≥ 600 / ≥ 1200
n/a	n/a
n/a	n/a
0.200 +/- 0.02	0.200 +/- 0.02
1.482	1.482
1.477	1.477
n/a	n/a
50 +/-2.5	50 +/-2.5
≤ 3	≤ 3
245 +/-10	245 +/-10
≤ 12.5	≤ 12.5
≥ 1%	≥ 1%
≥ 100kpsi	≥ 100kpsi

Part Number Identifier
IEC 60793-2- Category
ITU-T Recommendation
ISO 11801 Cable Class
Cabled Optical Performance of Fibre
Attenuation @ 850 / 1300nm (dB/km)
Bandwidth @ 850 / 1300nm (MHz.km)
Attenuation @ 1310 / 1550nm (dB/km)
Dispersion @ 1310 / 1550nm (ps/nm.km)
Numerical Aperture
Refractive Index @ 850nm
Refractive Index @ 1300nm
Refractive Index @ 1310 / 1550nm
Geometrical Data
Core Diameter (µm)
Mode Field Diameter (µm)
Core / Cladding Concentricity Error (µm)
Overall Coating Diameter (µm)
Coating Concentricity Error (µm)
Mechanical Data
Proof Test Level

062	H62
10-A1b	10-A1b
OM1	OM1
≤ 3.2 / ≤ 0.8	≤ 3.2 / ≤ 0.8
≥ 200 / ≥ 500	≥ 250 / ≥ 800
n/a	n/a
n/a	n/a
0.275 +/- 0.015	0.275 +/- 0.015
1.496	1.496
1.491	1.491
n/a	n/a
62.5 +/-2.5	62.5 +/-2.5
≤ 3	≤ 3
245 +/-10	245 +/-10
≤ 12.5	≤ 12.5
≥ 1%	≥ 1%
≥ 100kpsi	≥ 100kpsi

008	D08
50-B1.1	50-B1.3
G.652.c / G.652.d	G.652.c / G.652.d
OS1	OS2
n/a	n/a
n/a	n/a
≤ 0.38 / ≤ 0.25	≤ 0.38 / ≤ 0.25
≤ 3.5 / ≤ 18	≤ 3.5 / ≤ 18
n/a	n/a
n/a	n/a
n/a	n/a
1.467	1.467
9.3	9.3
≤ 0.8	≤ 0.8
245 +/-10	245 +/-10
≤ 12.5	≤ 12.5
≥ 1%	≥ 1%
≥ 100kpsi	≥ 100kpsi

Transmission Distance Identification



Fibre Type - 050
Brand-Rex standard identification characters for fibre type used in part numbering

First Window - Transmission distance in metres
Standard Multi Mode 850nm (SX)
High Grade Multi Mode 850nm (SX/SR)
Single Mode 1310nm (LR)

Second Window - Transmission distance in metres
Standard Multi Mode 1300nm (LX)
High Grade Multi Mode 1300nm (LX4)
Single Mode 1550nm (ER)

STANDARDS BASED ATTENUATION LIMITS

Cable Type	Fibre Type	Maximum Attenuation (dB/km) 850nm	Maximum Attenuation (dB/km) 1300nm
OM1	O62	3.5	1.5
OM1*	H62	3.5	1.5
OM2	O50	3.5	1.5
OM2*	H50	3.5	1.5
OM3	OM3	3.5	1.5
OM3*	Z50	3.5	1.5

* Fibre is a higher bandwidth than standard. For full spec see P4

Cable Type	Fibre Type	Maximum Attenuation (dB/km) 1310nm	Maximum Attenuation (dB/km) 1500nm
OS1	O08	1.0	1.0
OS2	D08	0.4	0.4

Single mode fibre is Low Water Peak (LWP).

Gigabit Ethernet

10 Gigabit Ethernet



Standard grade Multi Mode OM1 62.5/125 fibre



High grade Multi Mode OM1 62.5/125 fibre



Standard grade Multi Mode OM1 & OM2 50/125 fibre



High grade Multi Mode OM1 & OM2 50/125 fibre



Standard grade Multi Mode OM3 50/125 fibre



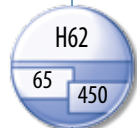
High grade Multi Mode OM3 50/125 fibre



Low water peak Single Mode OS1 8/125 fibre



Low water peak Single Mode OS2 8/125 fibre



The FibrePlus product range can be used for conventional structured cabling systems installations and for centralized optical fibre installations. FibrePlus supports the 2000m home run cabling schemes as described in ISO 11801 : 2002 and the 300m cabling described in TSB 72, Centralised Optical Fibre Guidelines and TIA/EIA 568B.

Link transmission distances are either attenuation limited or bandwidth limited. In attenuation limited installations, the individual loss of each component is summed for all the parts in the link and the sum must fall within the loss limit for the channel.

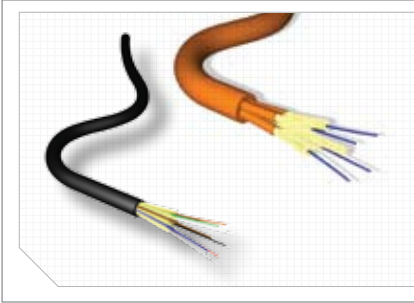
To the left is a summary of the drive distances possible on optical fibre links based on specific protocols using 2 connectors/splices. Components and cables with better than standards based performance may be required to achieve the maximum distances.

Optical Performance

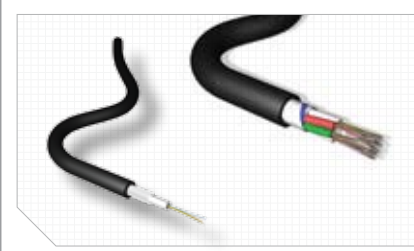
The published standards based optical performance of cables are shown in the tables above.

Brand-Rex optical cables and components have better individual performance compared to the standards table above. For full specifications see opposite page.

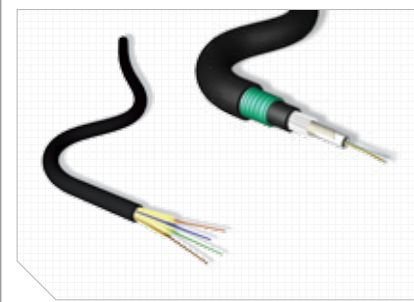
OPTICAL FIBRE PRODUCT RANGE

**Tight Buffered Cables**

Based on a 900 micron low smoke buffered element, Brand-Rex offer a range Premises Distribution Cables (PDC), and Breakout cables (BKT) inclusive of Zipcords, Duplex and Simplex designs. They are designed to be compact and lightweight and yet offer excellent tensile performance making them suitable for a wide range of building and horizontal distribution applications. The universal construction enables the cable to be used internally and externally without the need for transition cable joints.

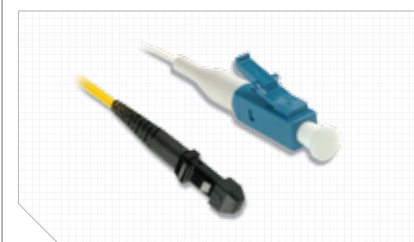
**Loose Tube Cables**

The range of loose tube cables offered by Brand-Rex covers fibre counts up to 216 and consists of both unitube and multi loose tube designs. Most cables are available in a variety of constructions from the basic duct grade cable through to a corrugated steel tape armoured cable. Cables are offered with a choice of sheath to suit the environment into which it will be installed, standard products are available with either a LSF universal sheath or a polyethylene sheath for external applications.

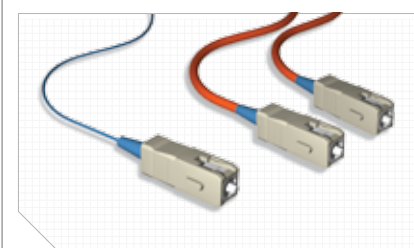
**Special Environment Cables**

The Unitube Fire Survival (UFS) cable is used in areas where critical data transmission must continue when the building structure in which it is installed is on fire. The use of the cable in building management, fire and security systems means that these vital systems will remain functional in the event of a real life incident.

The Tactical Field Deployable (TFD) Cable is approved to Def-Stan 60-1(part 3) and used for military applications. This flexible and rugged cable is also ideal for outside broadcast media events which require high performance for a reliable network in an extreme environment.

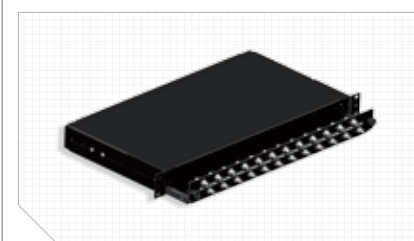
**Connectors and Adaptors**

A comprehensive range of standard and small form factor optical connectors and adaptors are offered as loose items for on or off site direct termination. The Brand-Rex range includes SC, ST, LC, MT-RJ and FC connector types. All connectors and adaptors are quality assured and meet a strict Brand-Rex specification. All products are suitable for use with the complete Brand-Rex optical product offering.

**Patch cords and Pigtailed**

Brand-Rex Optical patch cords facilitate the connection of transmission equipment and patch panels or interconnect / cross connect between panels. All patch cords are constructed using ruggedised patching cable and are pre-terminated with quality connectors. Patch cords are available up to 5m as standard in a variety of connector combinations.

Brand-Rex pigtailed create a permanent connections between patch panels and incoming cables or blown fibres. Pig tails are supplied with all standard connector options including SC, ST, LC, MT-RJ and FC. Other connectors are available on request.

**Optical Patch Panels**

The Brand-Rex optical panel range offers a versatile solution for all applications.

The panels have been designed to accept both conventional and blown fibre cables / ducts, and offer a level of fibre management as standard. The panels are available as either a bare shell to be populated on site, or with pre-loaded adaptors installed by Brand-Rex and delivered ready for installation.

OPTICAL FIBRE PRODUCT PART NUMBERS

Tight Buffered Distribution Cable

	62.5/125	50/125	OM3	8/125
2 Fibre	HF 062 PDC02 LU	HF 050 PDC02 LU	HF OM3 PDC02 LU	HF 008 PDC02 LU
4 Fibre	HF 062 PDC04 LU	HF 050 PDC04 LU	HF OM3 PDC04 LU	HF 008 PDC04 LU
6 Fibre	HF 062 PDC06 LU	HF 050 PDC06 LU	HF OM3 PDC06 LU	HF 008 PDC06 LU
8 Fibre	HF 062 PDC08 LU	HF 050 PDC08 LU	HF OM3 PDC08 LU	HF 008 PDC08 LU
12 Fibre	HF 062 PDC12 LU	HF 050 PDC12 LU	HF OM3 PDC12 LU	HF 008 PDC12 LU
16 Fibre	HF 062 PDC16 LU	HF 050 PDC16 LU	HF OM3 PDC16 LU	HF 008 PDC16 LU
24 Fibre	HF 062 PDC24 LU	HF 050 PDC24 LU	HF OM3 PDC24 LU	HF 008 PDC24 LU

Tight Buffered Field Deployable Cable

	62.5/125	50/125	OM3	8/125
2 Fibre	HF 062 TFD02 TPE	HF 050 TFD02 TPE	HF OM3 TFD02 TPE	HF 008 TFD02 TPE
4 Fibre	HF 062 TFD04 TPE	HF 050 TFD04 TPE	HF OM3 TFD04 TPE	HF 008 TFD04 TPE

Breakout and Patch Cable

	62.5/125	50/125	OM3	8/125
1 Fibre	HF 062 SFC01 L	HF 050 SFC01 L	HF OM3 SFC01 L	HF 008 SFC01 L
2 Fibre	HF 062 ZIP02 ZL	HF 050 ZIP02 ZL	HF OM3 ZIP02 ZL	HF 008 ZIP02 ZL
2 Fibre	HF 062 DUP02 L	HF 050 DUP02 L	HF OM3 DUP02 L	HF 008 DUP02 L
4 Fibre	HF 062 BKT04 LU	HF 050 BKT04 LU	HF OM3 BKT04 LU	HF 008 BKT04 LU
6 Fibre	HF 062 BKT06 LU	HF 050 BKT06 LU	HF OM3 BKT06 LU	HF 008 BKT06 LU
8 Fibre	HF 062 BKT08 LU	HF 050 BKT08 LU	HF OM3 BKT08 LU	HF 008 BKT08 LU
12 Fibre	HF 062 BKT12 LU	HF 050 BKT12 LU	HF OM3 BKT12 LU	HF 008 BKT12 LU
16 Fibre	HF 062 BKT16 LU	HF 050 BKT16 LU	HF OM3 BKT16 LU	HF 008 BKT16 LU
24 Fibre	HF 062 BKT24 LU	HF 050 BKT24 LU	HF OM3 BKT24 LU	HF 008 BKT24 LU

Central Loose Tube Cable

	62.5/125	50/125	OM3	8/125
2 Fibre	HF 062 UNI2 LU	HF 050 UNI2 LU	HF OM3 UNI2 LU	HF 008 UNI2 LU
4 Fibre	HF 062 UNI4 LU	HF 050 UNI4 LU	HF OM3 UNI4 LU	HF 008 UNI4 LU
6 Fibre	HF 062 UNI6 LU	HF 050 UNI6 LU	HF OM3 UNI6 LU	HF 008 UNI6 LU
8 Fibre	HF 062 UNI8 LU	HF 050 UNI8 LU	HF OM3 UNI8 LU	HF 008 UNI8 LU
12 Fibre	HF 062 UNI12 LU	HF 050 UNI12 LU	HF OM3 UNI12 LU	HF 008 UNI12 LU
16 Fibre	HF 062 UNI16 LU	HF 050 UNI16 LU	HF OM3 UNI16 LU	HF 008 UNI16 LU
24 Fibre	HF 062 UNI24 LU	HF 050 UNI24 LU	HF OM3 UNI24 LU	HF 008 UNI24 LU

Unitube Fire Survival Cable

	62.5/125	50/125	OM3	8/125
4 Fibre	EF 062 UNI4 L STA LU FS	EF 050 UNI4 L STA LU FS	EF OM3 UNI4 L STA LU FS	EF 008 UNI4 L STA LU FS
8 Fibre	EF 062 UNI8 L STA LU FS	EF 050 UNI8 L STA LU FS	EF OM3 UNI8 L STA LU FS	EF 008 UNI8 L STA LU FS
12 Fibre	EF 062 UNI12 L STA LU FS	EF 050 UNI12 L STA LU FS	EF OM3 UNI12 L STA LU FS	EF 008 UNI12 L STA LU FS
16 Fibre	EF 062 UNI16 L STA LU FS	EF 050 UNI16 L STA LU FS	EF OM3 UNI16 L STA LU FS	EF 008 UNI16 L STA LU FS
20 Fibre	EF 062 UNI20 L STA LU FS	EF 050 UNI20 L STA LU FS	EF OM3 UNI20 L STA LU FS	EF 008 UNI20 L STA LU FS
24 Fibre	EF 062 UNI24 L STA LU FS	EF 050 UNI24 L STA LU FS	EF OM3 UNI24 L STA LU FS	EF 008 UNI24 L STA LU FS

OPTICAL FIBRE PRODUCT PART NUMBERS

Universal Duct Grade Multi Loose Tube Cable - MDU 02

	62.5/125	50/125	OM3	8/125
12 Fibre	HF 062 S12 W LU	HF 050 S12 W LU	HF OM3 S12 W LU	HF 008 S12 W LU
24 Fibre	HF 062 S24 W LU	HF 050 S24 W LU	HF OM3 S24 W LU	HF 008 S24 W LU
36 Fibre	HF 062 S36 W LU	HF 050 S36 W LU	HF OM3 S36 W LU	HF 008 S36 W LU
48 Fibre	HF 062 S48 W LU	HF 050 S48 W LU	HF OM3 S48 W LU	HF 008 S48 W LU
60 Fibre	HF 062 S60 W LU	HF 050 S60 W LU	HF OM3 S60 W LU	HF 008 S60 W LU
72 Fibre	HF 062 S72 W LU	HF 050 S72 W LU	HF OM3 S72 W LU	HF 008 S72 W LU

Universal Duct Grade Multi Loose Tube Cable - MDU 03

	62.5/125	50/125	OM3	8/125
96 Fibre	HF 062 S96 W LU	HF 050 S96 W LU	HF OM3 S96 W LU	HF 008 S96 W LU
108 Fibre	HF 062 S108 W LU	HF 050 S108 W LU	HF OM3 S108 W LU	HF 008 S108 W LU
120 Fibre	HF 062 S120 W LU	HF 050 S120 W LU	HF OM3 S120 W LU	HF 008 S120 W LU
132 Fibre	HF 062 S132 W LU	HF 050 S132 W LU	HF OM3 S132 W LU	HF 008 S132 W LU
144 Fibre	HF 062 S144 W LU	HF 050 S144 W LU	HF OM3 S144 W LU	HF 008 S144 W LU

Direct Burial Steel Tape Armoured Multi Loose Tube Cable - MSU 02

	62.5/125	50/125	OM3	8/125
12 Fibre	HF 062 S12 W STA LU	HF 050 S12 W STA LU	HF OM3 S12 W STA LU	HF 008 S12 W STA LU
24 Fibre	HF 062 S24 W STA LU	HF 050 S24 W STA LU	HF OM3 S24 W STA LU	HF 008 S24 W STA LU
36 Fibre	HF 062 S36 W STA LU	HF 050 S36 W STA LU	HF OM3 S36 W STA LU	HF 008 S36 W STA LU
48 Fibre	HF 062 S48 W STA LU	HF 050 S48 W STA LU	HF OM3 S48 W STA LU	HF 008 S48 W STA LU
60 Fibre	HF 062 S60 W STA LU	HF 050 S60 W STA LU	HF OM3 S60 W STA LU	HF 008 S60 W STA LU
72 Fibre	HF 062 S72 W STA LU	HF 050 S72 W STA LU	HF OM3 S72 W STA LU	HF 008 S72 W STA LU

Direct Burial Steel Tape Armoured Multi Loose Tube Cable - MSU 03

	62.5/125	50/125	OM3	8/125
96 Fibre	HF 062 S96 W STA LU	HF 050 S96 W STA LU	HF OM3 S96 W STA LU	HF 008 S96 W STA LU
108 Fibre	HF 062 S108 W STA LU	HF 050 S108 W STA LU	HF OM3 S108 W STA LU	HF 008 S108 W STA LU
120 Fibre	HF 062 S120 W STA LU	HF 050 S120 W STA LU	HF OM3 S120 W STA LU	HF 008 S120 W STA LU
132 Fibre	HF 062 S132 W STA LU	HF 050 S132 W STA LU	HF OM3 S132 W STA LU	HF 008 S132 W STA LU
144 Fibre	HF 062 S144 W STA LU	HF 050 S144 W STA LU	HF OM3 S144 W STA LU	HF 008 S144 W STA LU

OPTICAL FIBRE PRODUCT PART NUMBERS

Part Unloaded Panels

Unloaded Optical for up to 24 ST or FC adaptors - Black	FPCC1SXXX24ST2
Unloaded Optical for up to 12 SC Duplex adaptors - Black	FPCC1SXXX24DC2
Unloaded Optical for up to 24 SC Duplex adaptors - Black	FPCC1SXXX48DC2
Unloaded Optical for up to 24 SC Simplex adaptors - Black	FPCC1SXXX24SC2

Optical Panel Accessories

Fibre management kit including loops and 24 way splice bridge	FPCCFMKIT001
3mm Bloduct bulkhead connector (including adaptor collar)	30-511-04
5mm Bloduct bulkhead connector	30-506-09
Blolite Tie Bracket 12w 5mm, including mounting kit	FPCCBKIT001
1/2 Blanck Tie Bracket	FPCCBBLK001
ST/FC Blanking Plugs (Black) - Pack 100	BPESC101-100
SC Simplex Blanking Plug (also suitable for LC & MT-RJ) (Black) - Pack 100	BPESC101-100
SC Duplex Blanking Plug (also suitable for LC & MT-RJ) (Black) - Pack 100	BPESC301-100

Notes: *Panels are also available in grey, to order please replace the '2' in the catalogue number with '8'. i.e. FPCC1SXSM04ST2 becomes FPCC1SXSM04ST8

Part Loaded Panels

Description	4 Adaptor	6 Adaptor	8 Adaptor	12 Adaptor	16 Adaptor	24 Adaptor
ST Single Mode	FPCC1SXSM04ST2	FPCC1SXSM06ST2	FPCC1SXSM08ST2	FPCC1SXSM12ST2	FPCC1SXSM16ST2	FPCC1SXSM24ST2
ST Multi Mode	FPCC1SXMM04ST2	FPCC1SXMM06ST2	FPCC1SXMM08ST2	FPCC1SXMM12ST2	FPCC1SXMM16ST2	FPCC1SXMM24ST2
FC Single Mode	FPCC1SXSM04FC2	FPCC1SXSM06FC2	FPCC1SXSM08FC2	FPCC1SXSM12FC2	FPCC1SXSM16FC2	FPCC1SXSM24FC2
SC Duplex - Single Mode	FPCC1SXSM08DC2	FPCC1SXSM12DC2	FPCC1SXSM16DC2	FPCC1SXSM24DC2	FPCC1SXSM32DC2	FPCC1SXSM48DC2
SC Duplex - Multi Mode	FPCC1SXMM08DC2	FPCC1SXMM12DC2	FPCC1SXMM16DC2	FPCC1SXMM24DC2	FPCC1SXMM32DC2	FPCC1SXMM48DC2
SC Simplex Single Mode	FPCC1SXSM04SC2	FPCC1SXSM06SC2	FPCC1SXSM08SC2	FPCC1SXSM12SC2	FPCC1SXSM16SC2	FPCC1SXSM24SC2
SC Simplex Multi Mode	FPCC1SXMM04SC2	FPCC1SXMM06SC2	FPCC1SXMM08SC2	FPCC1SXMM12SC2	FPCC1SXMM16SC2	FPCC1SXMM24SC2
MT-RJ	FPCC1SXMM08MJ2	FPCC1SXMM12MJ2	FPCC1SXMM16MJ2	FPCC1SXMM24MJ2	FPCC1SXMM32MJ2	FPCC1SXMM48MJ2
LC Duplex Single Mode	FPCC1SXSM08LC2	FPCC1SXSM12LC2	FPCC1SXSM16LC2	FPCC1SXSM24LC2	FPCC1SXSM32LC2	FPCC1SXSM48LC2
LC Duplex Multi Mode	FPCC1SXMM08LC2	FPCC1SXMM12LC2	FPCC1SXMM16LC2	FPCC1SXMM24LC2	FPCC1SXMM32LC2	FPCC1SXMM48LC2

Single Mode Components

	Connector	Adaptor
SC Simplex	FOCSCPEPM001	BHCSCSM001
SC Duplex	FOCDCEPMM001	-
SC Duplex Clip	FOCSCKLBU	-
ST	FOCSTEPMM001	BHCSTSM001
LC Duplex	FOCLCEPMM001	BHCLCMM001
LC Simplex	FOCLSEPM002	-
MT-RJ Male	FOCMJEPMM001	BHCMJXX001
MT-RJ Female	FOCMJEPMM002	BHCMJXX001
MT-RJ Field Install	FOCMJFI008001	BHCMJXX001

Multi Mode Components

	Connector	Adaptor
SC Simplex	FOCSCPEMM001	BHCSCMM001
SC Duplex	FOCDCEPMM001	BHDCM001
SC Duplex Clip	FOCSCKLBE	-
ST	FOCSTEPMM001	BHCSTMM001
LC Duplex	FOCLCEPMM001	BHCLCMM001
LC Simplex	FOCLSEPM002	-
MT-RJ Male	FOCMJEPMM001	BHCMJXX001
MT-RJ Female	FOCMJEPMM002	BHCMJXX001
MT-RJ Field Install	FOCMJFI050001	BHCMJXX001
MT-RJ Field Install	FOCMJFI062001	BHCMJXX001

OPTICAL FIBRE PRODUCT PART NUMBERS

Patch Cords

	1.00m	2.00m	3.00m	5.00m
FC - FC Duplex	HOPFC050010FC291	HOPFC050020FC291	HOPFC050030FC291	HOPFC050050FC291
LC - SC Duplex	HOPLC050010SC293	HOPLC050020SC293	HOPLC050030SC293	HOPLC050050SC293
LC - ST Duplex	HOPLC050010ST293	HOPLC050020ST293	HOPLC050030ST293	HOPLC050050ST293
LC - LC Duplex	HOPLC050010LC293	HOPLC050020LC293	HOPLC050030LC293	HOPLC050050LC293
MT-RJ - MT-RJ Duplex	HOPMJ050010MJ292	HOPMJ050020MJ292	HOPMJ050030MJ292	HOPMJ050050MJ292
MT-RJ - SC Duplex	HOPMJ050010SC292	HOPMJ050020SC292	HOPMJ050030SC292	HOPMJ050050SC292
MT-RJ - ST Duplex	HOPMJ050010ST292	HOPMJ050020ST292	HOPMJ050030ST292	HOPMJ050050ST292
LC - MT-RJ Duplex	HOPLC050010MJ292	HOPLC050020MJ292	HOPLC050030MJ292	HOPLC050050MJ292
SC - SC Duplex	HOPSC050010SC291	HOPSC050020SC291	HOPSC050030SC291	HOPSC050050SC291
SC - ST Duplex	HOPSC050010ST291	HOPSC050020ST291	HOPSC050030ST291	HOPSC050050ST291
ST - ST Duplex	HOPST050010ST291	HOPST050020ST291	HOPST050030ST291	HOPST050050ST291

Note: For other fibre types replace xxx in the part number e.g. HOPLCxxx010LC293, with the part number identifier as shown on page 4.

Pig Tails

	62.5/125	50/125	OM3	8/125
FC - 1 metre	HOTFC062001	HOTFC050001	HOTFCOM3001	HOTFC008001
SC - 1 metre	HOTSC062001	HOTSC050001	HOTSCOM3001	HOTSC008001
ST - 1 metre	HOTST062001	HOTST050001	HOTSTOM3001	HOTST008001
LC - 1 metre	HOTLS062001	HOTLS050001	HOTLSOM3001	HOTLS008001
MT-RJ - 1 metre	HOTMJ062501	HOTMJ050501	HOTMJOM3501	HOTMJ008501



brand-rex head office
viewfield industrial estate
glenrothes, fife
KY6 2RS
united kingdom

tel: +44 (0) 1592 772124
fax: +44 (0) 1592 775314

brand-rex argentina
c/ingeniero butty 240, piso 4º
(C1001AFB) buenos aires
argentina

tel: +54 11 4590-2242 / 4
fax: +54 11 4590-2201

brand-rex asia pacific
17/F prosperity centre
77-81 container port road
kwai chung
hong kong

tel: +852 3620 2602
fax: +852 3621 0018

brand-rex china
room B105-A23, FESCO building
No. 14 chaoyangmen nandajie
changyang district
beijing
pr china

tel: +852 3620 2602
fax: +852 3621 0018

brand-rex central & eastern europe
millennium tower
handelskai 94-96
1200 wien
austria

tel: +431 24027 512
fax: +431 24027 66510

brand-rex france
120, rue jean jaurès
92 300 levallois perret
france

tel: +33 (0) 1 70 98 78 25
fax: +33 (0) 1 70 98 78 36

brand-rex germany
bunsenstrasse 5
D-51647 gummersbach
germany

tel: +49 (0) 2261 814243
fax: +49 (0) 2261 814909

brand-rex IMEA
PO box 123908
M-3 mezzanine floor
sheikha sana building
sheikh zayed road
al wasl, dubai
united arab emirates

tel: +971 4 321 7525
fax: +971 4 321 7535

brand-rex italy
via giovanni da udine, 34
20156 milano
italy

tel: +39 02 3809 3711
fax: +39 02 30412014

brand-rex london
72 cannon street
london
EC4N 6AE
united kingdom

tel: +44 (0) 207 489 7637
fax: +44 (0) 207 113 2239

brand-rex nordic
mänskensvägen 14A
44340 gråbo
sweden

tel: +46 (0) 704 621950

brand-rex portugal
lagoas park edificio 8 – piso 0
2740-244 porto salvo
portugal

tel: +351 21 421 4133
fax: +351 21 421 4135

brand-rex spain
avenida de la vega, 1
edificio 3. planta 2. oficina 11
28108 alcobendas
madrid, spain

tel: +34 914 905 919
fax: +34 916 573 331

www.brand-rex.com
marketing@brand-rex.com

The information contained in this document is valid and correct at the time of issue. However, we reserve the right to modify details without notice in the light of subsequent Standard / Specification changes and ongoing technical developments.
© Brand-Rex Limited 2008

Literature Ref: FIBREPLUS/UK/2 0608

